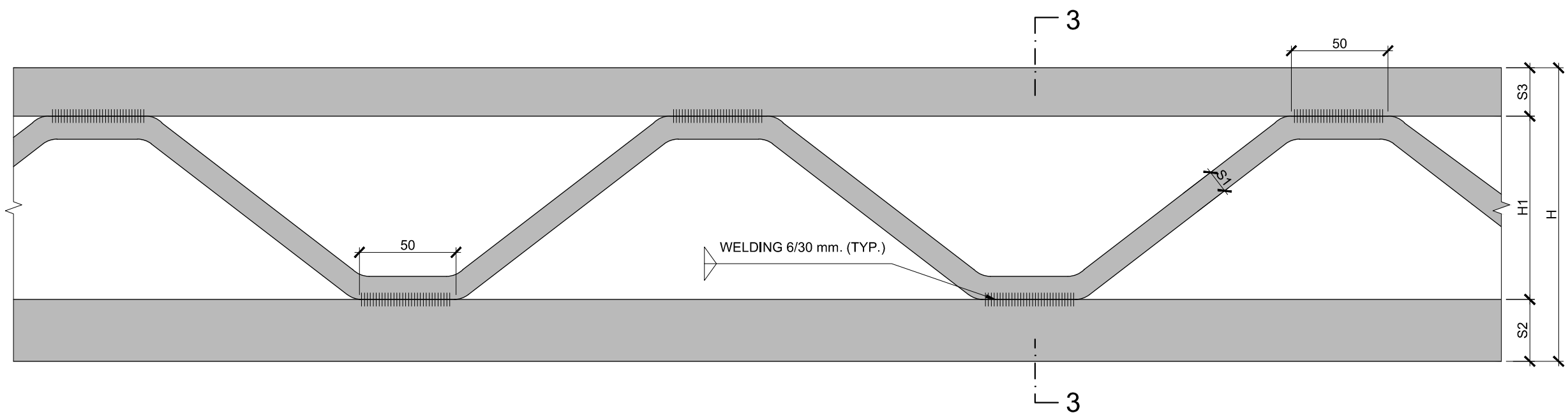
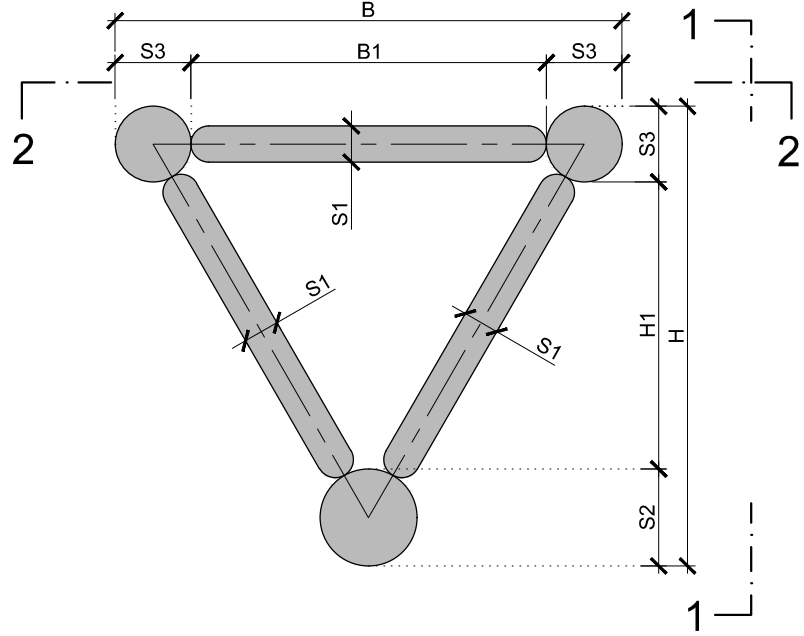


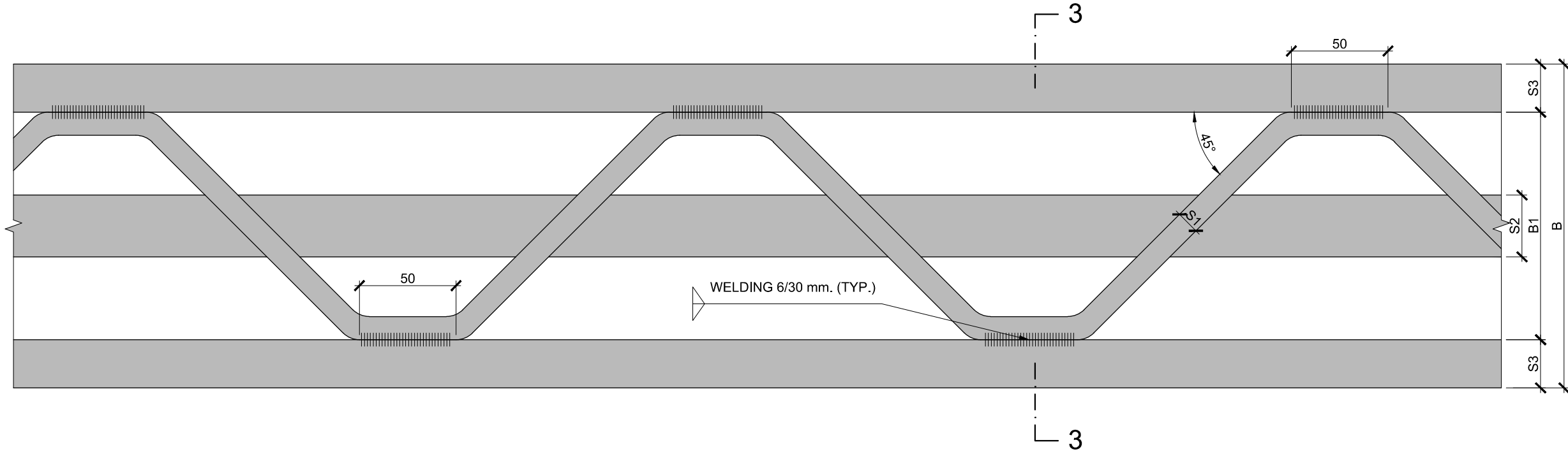
VIEW 1-1



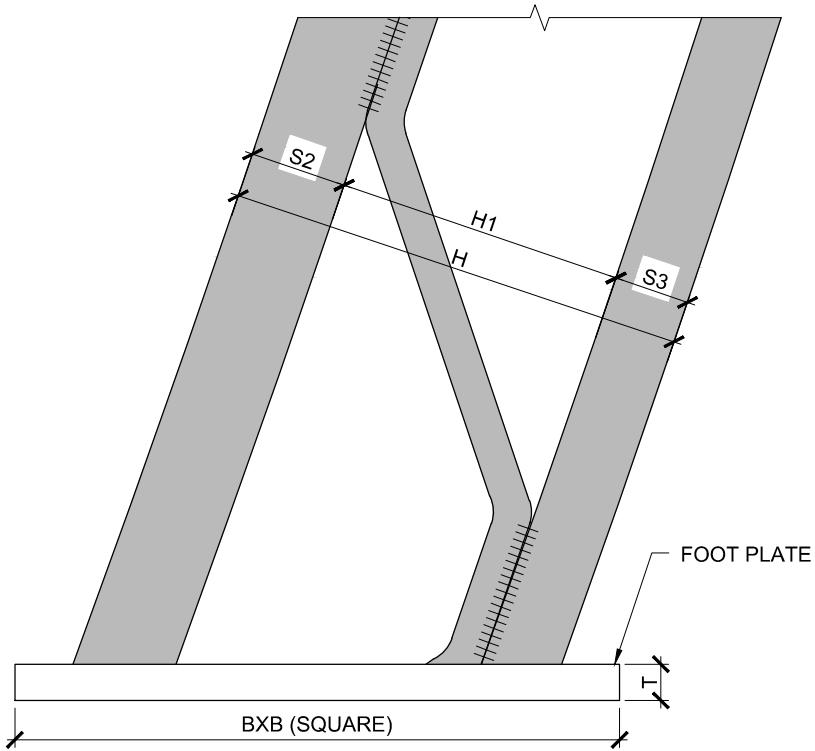
SECTION 3-3



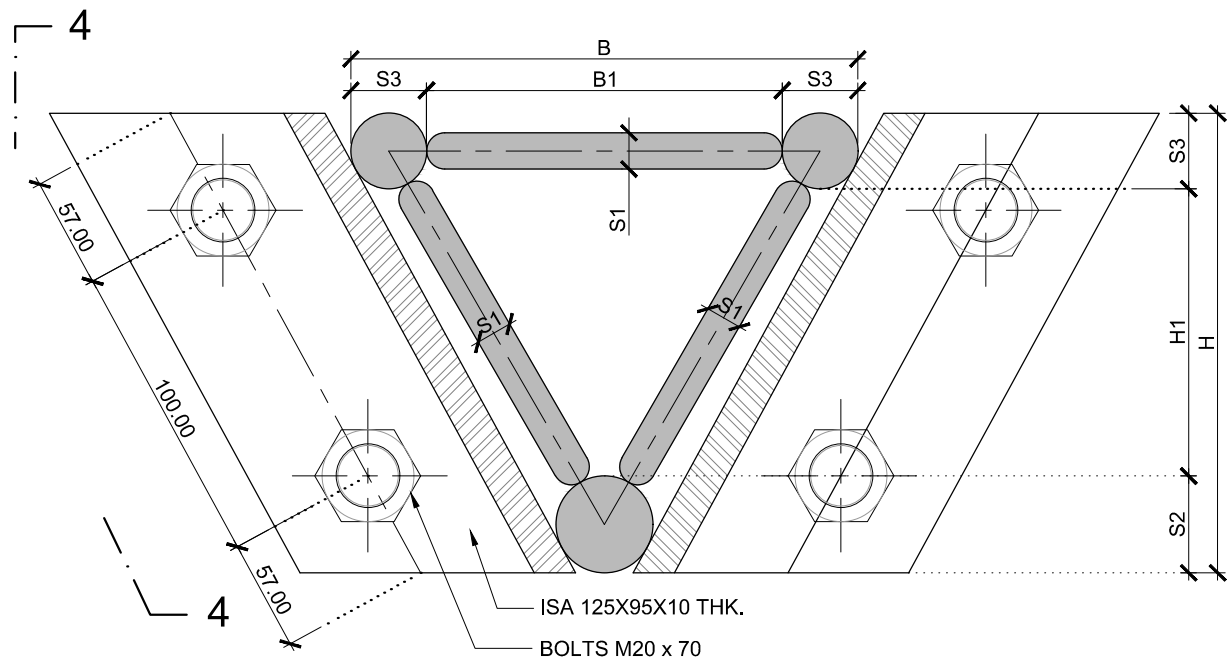
VIEW 2-2



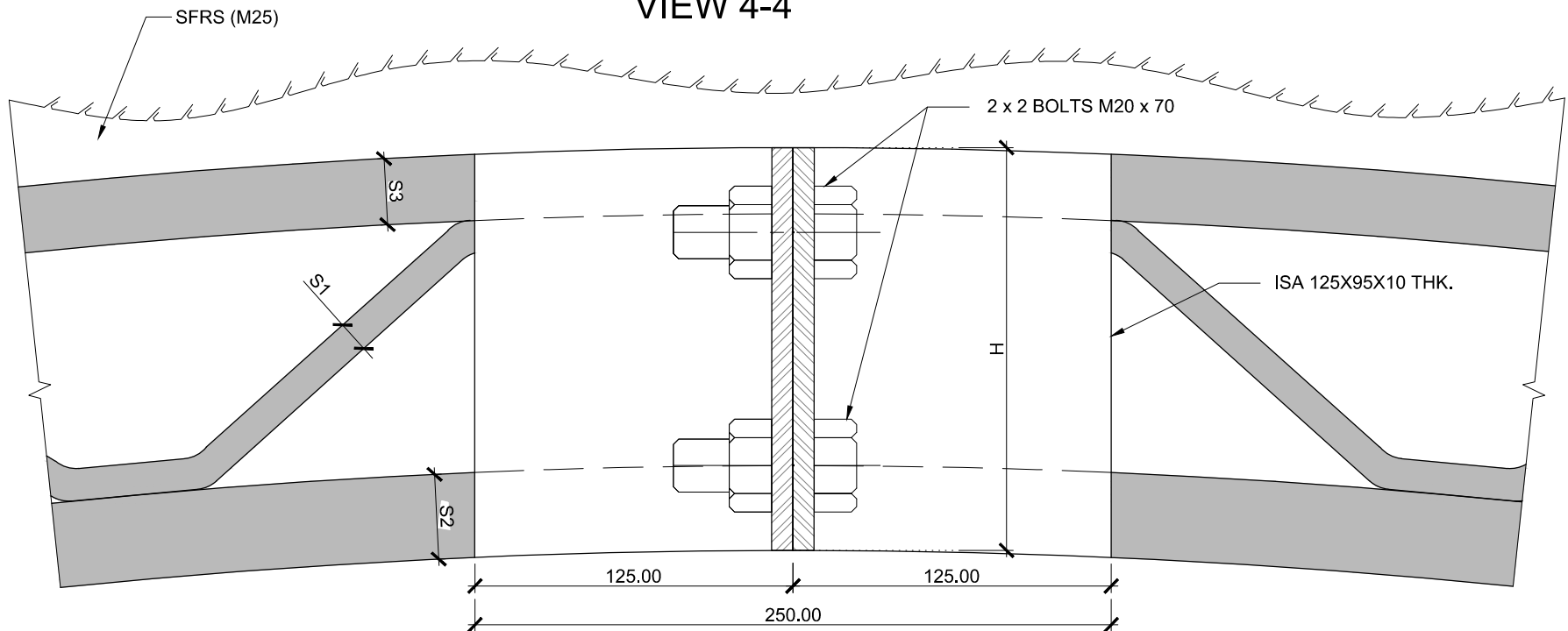
DETAIL OF FOOT PLATE
(VALID FOR TEMPORARY STRUCTURE)



JOINT DETAIL (TYP.)



VIEW 4-4



DETAILS OF LATTICE GIRDERS

TYPE	H (mm)	H1 (mm)	B (mm)	B1 (mm)	S1 (mm)	S2 (mm)	S3 (mm)	BXB (mm)	T (mm)
TYPE-1	187	130	208	158	Ø12	Ø32	Ø25	240X240	12

NOTES:

- ALL DIMENSIONS ARE IN MILLIMETRES, UNLESS OTHERWISE SPECIFIED.
- NO DIMENSION SHALL BE MEASURED FROM THE DRAWING.
- STEEL BARS SHOWN AS S1, S2 & S3 SHALL BE OF GRADE Fe-500 CONFORMING TO IS:1786.
- ALL STRUCTURAL STEELS SHALL CONFORM TO IS:2062.
- ALL WELDING SHALL BE CARRIED OUT BY USING SHIELDED ARC METHOD AS DESCRIBED IN THE SP-12, ISI HAND BOOK FOR GAS WELDERS AND ISI HANDBOOK OF MANUAL METAL ARC WELDING FOR WELDERS.

				Project Title				Client				Drawing Title:				CONSULTANT			
				Consultancy Services for carrying out Feasibility Study, Preparation of Detailed Project Report (DPR) and providing pre-construction services in respect of 4 Lining of Kohima Bypass connecting NH-39 (New NH-02) ,NH-150 (New NH-02), NH-61 (New NH-29) and NH-39 (New NH-02) on Engineering, Procurement and Construction (EPC) mode in the state of Nagaland				National Highways & Infrastructure Development Corporation Ltd				TUNNEL TYPICAL DETAIL OF LATTICE GIRDER				HIGHWAY ENGINEERING CONSULTANT IN ASSOCIATION WITH AGNITIO INFRASTRUCTURE PROJECTS PVT LTD			
				Revision Details				National Highways & Infrastructure Development Corporation Ltd				Drawing No.: HEC-AIPPL/NHIDCL/KB/TUN/10				Sheet : OF 45			
				Chk By Date Suffix				National Highways & Infrastructure Development Corporation Ltd				Scale :- NTS							
								National Highways & Infrastructure Development Corporation Ltd				Drrn S.TYAGI				Dgn. P.MISHRA			
												Appd A.C. GARG				Date OCT-2018			